

Series 4FH-50 FORCED DRAFT FIREBOX GENERATOR

Model	INPUTS			GROSS OUTPUT					GAS EFFICIENCIES				OIL EFFICIENCIES			
	Gas Input MBH	Oil Input MBH	Oil Input GPH	Water		Steam			Water		Steam		Water		Steam	
				MBH	BHP	MBH	BHP	Lb./Hr.	Comb. Eff. %	Therm. Eff. %	Comb. Eff. %	Therm. Eff. %	Comb. Eff. %	Therm. Eff. %	Comb. Eff. %	Therm. Eff. %
63A	528	504	3.6	431	12.9	425	12.7	438	84.8	81.6	84.5	80.4	87.6	84.6	87.6	83.5
78A	653	630	4.5	533	15.9	526	15.7	542	84.8	81.6	84.6	80.5	87.7	84.7	87.6	83.6
92A	770	742	5.3	629	18.8	621	18.5	640	84.8	81.7	84.6	80.6	87.7	84.8	87.7	83.7
107A	895	868	6.2	732	21.9	722	21.6	745	84.9	81.8	84.6	80.7	87.8	84.9	87.7	83.8
127A	1,063	1,022	7.3	871	26.0	859	25.7	886	84.9	82.0	84.6	80.8	87.8	85.0	87.7	83.9
154A	1,289	1,246	8.9	1,059	31.6	1,044	31.2	1,076	85.0	82.2	84.7	81.0	87.9	85.2	87.8	84.1
180A	1,506	1,456	10.4	1,240	37.0	1,222	36.5	1,260	85.0	82.3	84.7	81.1	88.0	85.4	87.8	84.2
209A	1,750	1,680	12.0	1,444	43.1	1,423	42.5	1,467	85.1	82.5	84.8	81.3	88.0	85.6	87.8	84.4
240A	2,009	1,932	13.8	1,662	49.7	1,638	48.9	1,688	85.2	82.7	84.8	81.5	88.1	85.8	87.9	84.6
277A	2,319	2,240	16.0	1,924	57.5	1,896	56.6	1,954	85.3	83.0	84.9	81.7	88.2	86.1	87.9	84.8
311A	2,603	2,506	17.9	2,166	64.7	2,133	63.7	2,199	85.3	83.2	84.9	82.0	88.3	86.3	88.0	85.0
345A	2,888	2,786	19.9	2,410	72.0	2,373	70.9	2,446	85.4	83.4	85.0	82.2	88.4	86.5	88.1	85.2
360A	3,013	2,898	20.7	2,517	75.2	2,479	74.0	2,555	85.4	83.5	85.0	82.3	88.4	86.6	88.1	85.3
450A	3,769	3,626	25.9	3,171	94.7	3,122	93.3	3,218	85.6	84.1	85.2	82.8	88.7	87.2	88.2	85.8
563A	4,713	4,536	32.4	4,001	119.5	3,937	117.6	4,058	85.9	84.9	85.3	83.5	89.0	88.0	88.4	86.5
675A	5,650	5,446	38.9	4,838	144.5	4,758	142.1	4,905	86.2	85.6	85.5	84.2	89.3	88.8	88.6	87.2
827	6,921	6,678	47.7	5,914	176.7	5,830	174.1	6,008	86.1	85.4	85.4	84.2	89.2	88.5	88.5	87.2
993	8,310	8,022	57.3	7,084	211.6	7,000	209.1	7,215	86.0	85.2	85.3	84.2	89.1	88.3	88.4	87.3
1157	9,683	9,352	66.8	8,235	246.0	8,158	243.7	8,408	85.9	85.0	85.1	84.2	89.0	88.0	88.3	87.3
1323	11,071	10,710	76.5	9,393	280.6	9,328	278.7	9,614	85.9	84.8	85.0	84.3	88.9	87.7	88.2	87.3
1654	13,843	13,258	94.7	11,670	348.6	11,573	345.7	11,927	85.4	84.3	84.7	83.6	88.9	88.0	88.2	87.2
1985	16,613	15,890	113.5	14,005	418.4	13,888	414.9	14,314	85.3	84.3	84.6	83.6	88.9	88.1	88.2	87.3
2315	19,374	18,578	132.7	16,390	489.6	16,255	485.6	16,753	85.6	84.6	84.9	83.9	89.0	88.2	88.3	87.4
2645	22,135	21,252	151.8	18,793	561.4	18,638	556.8	19,209	85.8	84.9	85.0	84.2	89.1	88.4	88.3	87.6
3075A	25,734	24,738	176.7	21,874	653.4	21,694	648.1	22,358	85.8	85.0	85.1	84.3	89.2	88.4	88.4	87.6

Model	IBR NET RATING			HEATING SURFACE - SQ. FT.		WATER CONTENT - GAL.		APPROX. WEIGHT - LBS.		
	Water MBH	Steam MBH		Fireside	Waterside	Steam	Water	Dry Weight	Full Weight	
		MBH	Sq. Ft.						Steam	Water
63A	374	319	1,327	59	63	61	86	1,700	2,200	2,420
78A	464	394	1,643	73	78	76	107	1,900	2,530	2,795
92A	547	466	1,940	86	92	90	127	2,100	2,845	3,160
107A	637	542	2,257	101	107	105	148	2,400	3,270	3,630
127A	758	644	2,685	120	127	117	161	2,700	3,670	4,040
154A	921	783	3,263	145	154	139	191	3,100	4,260	4,695
180A	1,078	917	3,820	168	180	162	222	3,300	4,645	5,155
209A	1,256	1,081	4,504	194	209	187	257	3,600	5,155	5,745
240A	1,445	1,260	5,250	224	240	207	276	4,200	5,920	6,500
277A	1,673	1,471	6,129	257	277	238	317	4,600	6,575	7,245
311A	1,883	1,656	6,902	289	311	267	355	5,300	7,515	8,265
345A	2,095	1,842	7,677	320	345	296	394	5,600	8,055	8,890
360A	2,189	1,924	8,018	360	398	470	569	6,900	10,800	11,645
450A	2,757	2,424	10,099	450	497	537	666	8,700	13,180	14,255
563A	3,479	3,056	12,735	563	622	664	800	9,300	14,815	15,975
675A	4,207	3,694	15,393	675	746	787	947	11,000	17,530	18,895
827	5,143	4,526	18,858	827	893	761	1,003	13,200	19,550	21,565
993	6,160	5,435	22,646	993	1,072	925	1,220	14,300	22,015	24,475
1157	7,161	6,334	26,391	1,157	1,250	1,050	1,330	17,600	26,360	28,695
1323	8,168	7,243	30,177	1,323	1,429	1,227	1,554	19,800	29,980	32,760
1654	10,148	8,985	37,438	1,654	1,786	1,443	1,826	23,000	35,010	38,200
1985	12,178	10,783	44,929	1,985	2,143	1,686	2,147	28,000	41,995	45,870
2315	14,253	12,620	52,584	2,315	2,500	1,935	2,473	34,500	50,565	55,085
2645	16,341	14,470	60,293	2,645	2,857	2,100	2,718	38,200	55,630	60,820
3075A	19,021	16,843	70,179	3,075	3,321	2,688	3,592	49,000	71,315	78,965

Ratings based on 5 square feet of heating surface per boiler horsepower.
 * Light Oil - 140,000 BTU/GAL

Series 4F-40 FORCED DRAFT FIREBOX GENERATOR

Instantaneous Hot Water Heating Coils

RATED CAPACITY—GALLONS HEATED**
40° TO 140° F BOILER WATER TEMPERATURE

Coil Number	*For Use in the Following Boiler Sizes Subject to Capacity Limitation of Boiler	180° F GPM	200° F GPM	212° F GPM
INA-210	All sizes	3.5	4.3	5.3
INA-300	All except 4F-63	5.0	6.3	7.8
INA-360	All sizes	6.0	7.5	9.3
INA-450	All except 4F-63	7.5	9.3	11.7
INA-600	4F-154 and larger, also 4F-107	10.0	12.5	15.5
INA-750	4F-154 and larger, also 4F-107	12.5	15.6	19.4
INA-900	4F-92 and larger	15.0	17.5	23.3
INA-1125	4F-154 and larger	18.8	23.3	29.2
INA-1350	4F-277 and larger, also 4F-209	22.5	28.2	35.0
INA-1500	4F-345 and larger	25.0	31.3	38.8

*Two coils of any size or combination of sizes may be installed in 4N-1157 and larger.

** Intermittent draw ratings

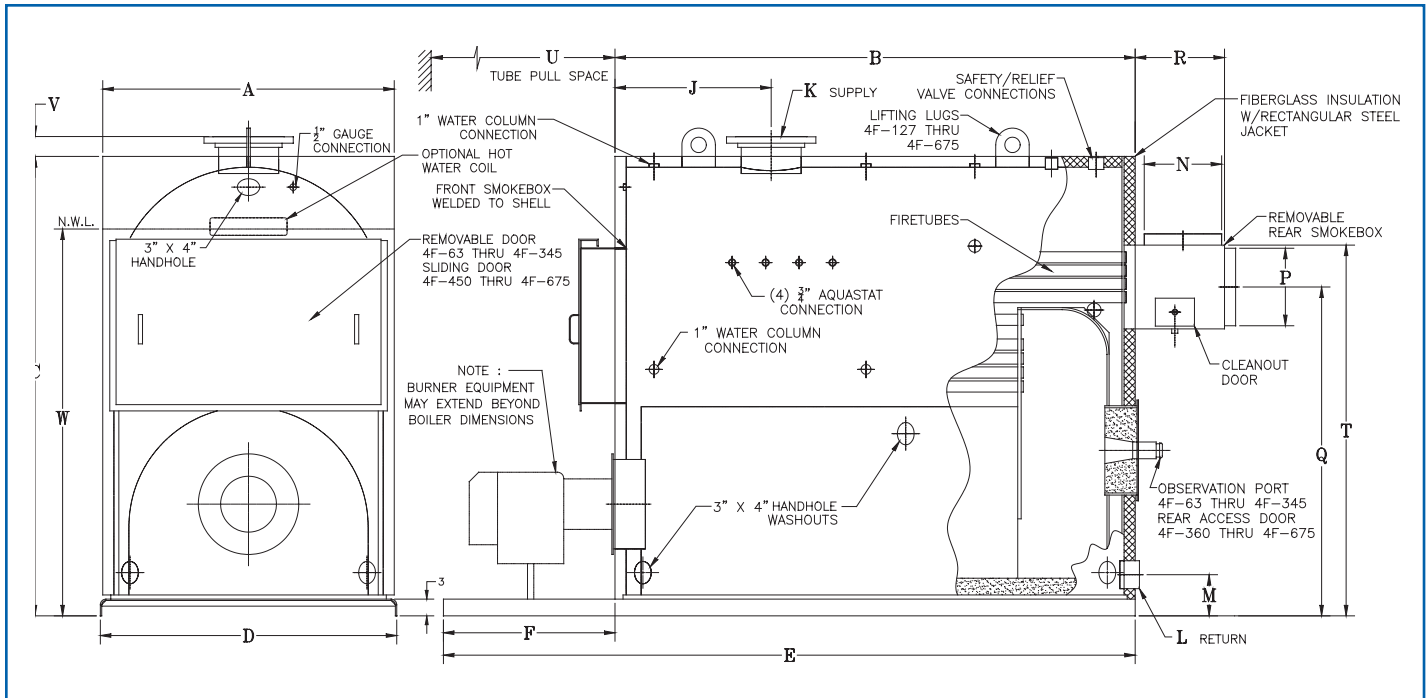


©2015 Burnham Commercial
P.O. Box 3939 • Lancaster, PA 17604
Phone: 888.791.3790 • Fax: 717.293.5803
www.burnhamcommercial.com

Form No. PL81465521012-05/15-1Mc

Printed in the U.S.A.

Series 4F — Models 63 - 675

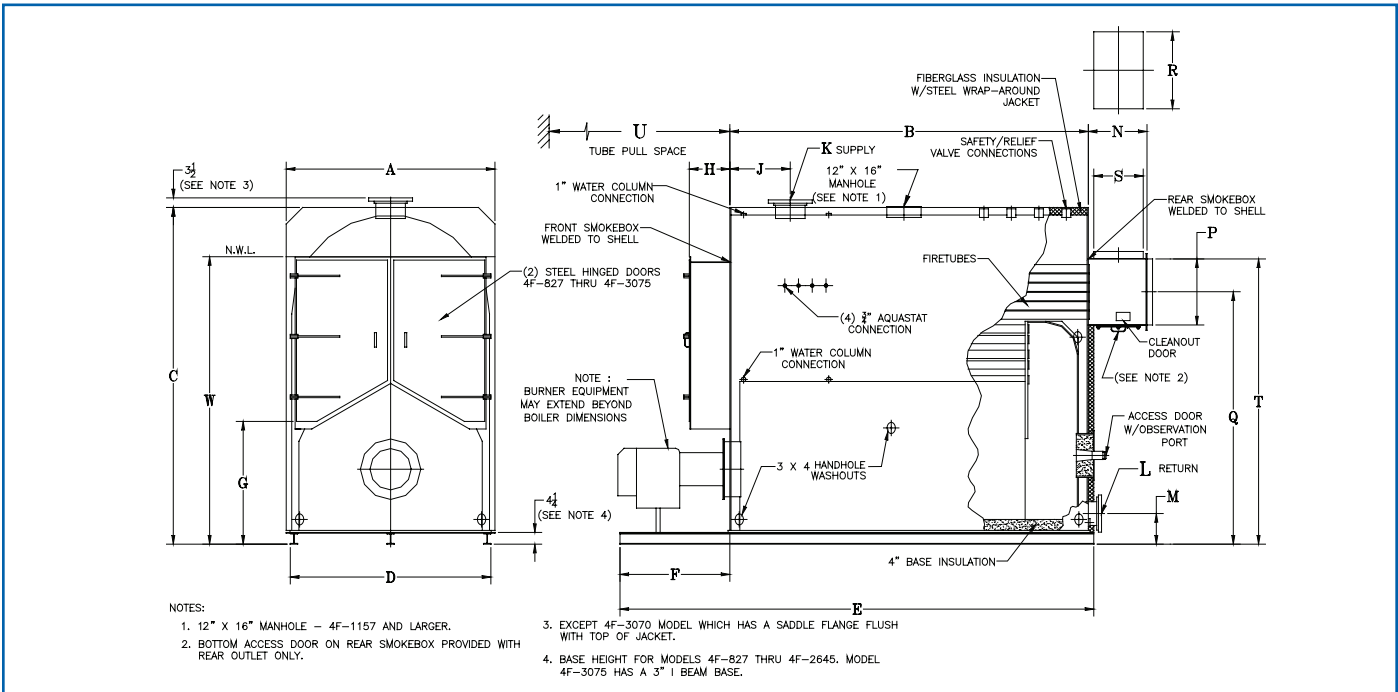


Dimensions (in Inches)

4F Boiler Models	63	78	92	107	127	154	180	209	240	277	311	345	360	450	563	675
A - Boiler Width	31	31	31	31	36-3/8	36-3/8	36-3/8	36-3/8	45-1/8	45-1/8	45-1/8	45-1/8	52-3/4	52-3/4	56-1/2	56-1/2
B - Boiler Length	32	39	45-1/2	52-1/2	44-1/2	53	61	70	57	65	72-1/2	80	80-3/4	93-1/4	104-3/8	122-1/4
C - Boiler Height	55-1/4	55-1/4	55-1/4	55-1/4	63-5/8	63-5/8	63-5/8	63-5/8	70-5/8	70-5/8	70-5/8	70-5/8	82-7/16	82-7/16	85-3/16	85-3/16
D - Base Width	33-1/4	33-1/4	33-1/4	33-1/4	38-5/8	38-5/8	38-5/8	38-5/8	47-3/8	47-3/8	47-3/8	47-3/8	53-1/8	53-1/8	57	57
E - Base Length	47-1/2	54-1/2	65	72	64	72-1/2	80-1/2	92-1/2	79-1/2	87-1/2	95	102-1/2	107-1/2	124	135-1/8	153
F - Base Extension	15-1/2	15-1/2	19-1/2	19-1/2	19-1/2	19-1/2	19-1/2	22-1/2	22-1/2	22-1/2	22-1/2	22-1/2	26-3/4	30-3/4	30-3/4	30-3/4
G - Front Smoke Box Height	27-5/16	27-5/16	27-5/16	27-5/16	29-7/16	29-7/16	29-7/16	29-7/16	35-1/8	35-1/8	35-1/8	35-1/8	38-1/2	38-1/2	41-9/16	41-9/16
H - Front Smoke Box Depth	5-1/2	5-1/2	5-1/2	5-1/2	6-1/2	6-1/2	6-1/2	6-1/2	7-1/2	7-1/2	7-1/2	7-1/2	6-1/2	6-1/2	7-1/2	7-1/2
J - Supply Location	13	13	13	13	16	16	16	16	19	19	19	19	28	28	28	28
*K - Supply Size	4	4	4	4	6	6	6	6	6	8	8	8	8	10	10	10
*L - Return Size - Steam	3	3	3	3	4	4	4	4	4	4	4	4	4	4	4	4
M - Return Location	6-1/2	6-1/2	6-1/2	6-1/2	7	7	7	7	7	7	7	7	7-3/8	7-3/8	7-3/8	7-3/8
N - Top Vent Collar Dia.	7	7	7	7	10	10	10	10	12	12	12	12	—	—	—	—
P - Rear Vent Collar Dia.	—	—	—	—	—	—	—	—	—	—	—	—	14	14	18	18
Q - Rear Vent Collar Height	38	38	38	38	46-1/2	46-1/2	46-1/2	46-1/2	52	52	52	52	58-13/16	58-13/16	59-5/8	59-5/8
R - Smoke Box Depth	9	9	9	9	12	12	12	12	14	14	14	14	16	16	20	20
T - Top Vent Collar Height	42-1/2	42-1/2	42-1/2	42-1/2	52-1/2	52-1/2	52-1/2	52-1/2	59-1/4	59-1/4	59-1/4	59-1/4	66-5/16	66-5/16	69-1/8	69-1/8
U - Tube Pull Space	32	39	45-1/2	52-1/2	44-1/2	53	61	70	57	65	72-1/2	80	81-1/2	94	105	123
V - Supply Fitting Height	1-1/2	1-1/2	1-1/2	1-1/2	3-1/4	3-1/4	3-1/4	3-1/4	3-1/4	3-1/4	3-1/4	3-1/4	3-3/8	3-3/8	3-7/16	3-7/16
W - Normal Water Line Height	43-3/4	43-3/4	43-3/4	43-3/4	51-1/2	51-1/2	51-1/2	51-1/2	58	58	58	58	69-3/16	69-3/16	72	72

*3" and 4" are IPS female thread, 6" and larger are flanged. 150# bolt pattern. Specifications, Dimensions Data Subject to Change without Notice

Series 4F — Models 827 - 3075



Dimensions (in Inches)

4F Boiler Models	827	993	1157	1323	1654	1985	2315	2645	3075
A - Boiler Width	64	64	70	70	76	82	82	82	96
B - Boiler Length	106-1/4	129	116-1/2	136	130-1/2	128	148	163	163
C - Boiler Height	95-3/16	95-3/16	106-3/4	106-3/4	122-3/8	142-3/8	142-3/8	142-3/8	151-1/2
D - Base Width	61	61	67	67	73	79	79	79	93
E - Base Length	138-1/4	161	158-1/2	178	172-1/2	170	190	205	213
F - Base Extension	30	30	40	40	40	40	40	40	48
G - Front Smoke Box Height	29-1/8	29-1/8	33-11/16	33-11/16	41-7/8	55-1/8	55-1/8	55-1/8	69-3/4
H - Front Smoke Box Depth	12-3/4	12-3/4	13-1/2	13-1/2	14-1/2	15-1/2	15-1/2	15-1/2	16-1/2
J - Supply Location	22	22	22	22	22	22	22	22	68
*K - Supply Size	8	8	8	8	10	12	12	12	12
*L - Return Size - Steam	4	4	4	6	6	6	6	6	6
Return Size - Water	6	6	6	8	8	8	8	8	8
M - Return Location	10-1/4	10-1/4	11-1/8	11-1/8	11-1/8	11-1/2	11-1/2	11-1/2	10-1/2
N - Rear Smoke Box Depth	19-3/8	19-3/8	19-3/8	19-3/8	21-3/8	23-3/8	23-3/8	23-3/8	23-3/8
P - Rear Vent Collar Dia.	20	20	22	22	24	28	28	28	30
Q - Rear Vent Collar Height	66-3/16	66-3/16	76-13/16	76-13/16	90-11/16	106-5/16	106-5/16	106-5/16	110-1/2
R - Top Vent Collar Width	22	22	26	26	28	34	34	34	44
S - Top Vent Collar Depth	16	16	16	16	18	20	20	20	20
T - Top Vent Collar Height	76-1/8	76-1/8	87-3/16	87-3/4	102-5/8	120-1/4	120-1/4	120-1/4	123-15/16
U - Tube Pull Space	108	131	118-1/2	138	132-1/2	130	150	165	165
W - Normal Water Line Height	78-1/4	78-1/4	89-3/4	89-3/4	104-1/2	118-1/2	118-1/2	118-1/2	126

*4" are IPS female thread, 6" and larger are flanged. 150# bolt pattern. *Specifications, Dimensions Data Subject to Change without Notice*